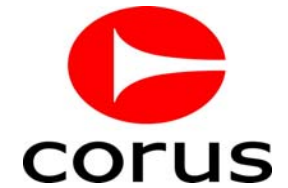


corus

Corus Strip Products IJmuiden



M.Dudink

3 september 2008



Logistics requirements for rail freight transport

Short presentation



- What
- When
- Where
- How
- How much

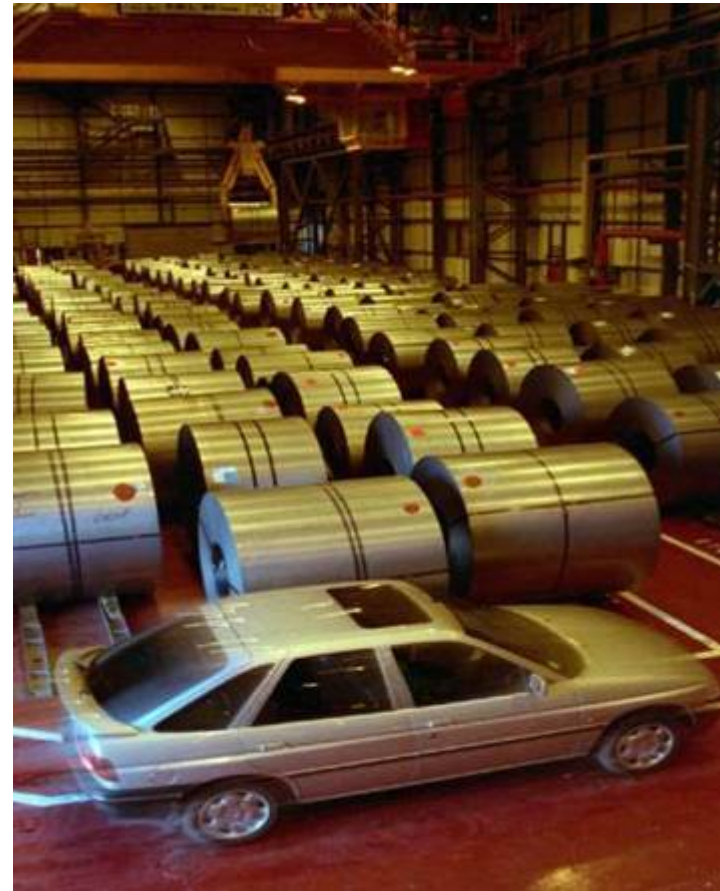


Extensive presentation

- place of origin
- delivery location
- time of departure and arrival
- quantity
- frequently
- flexibility to prevent JTL deliveries
- quality



Quality



No Quality



Extensive presentation

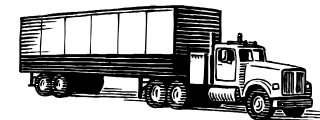
- place of origin
- delivery location
- time of departure and arrival
- quantity
- frequency
- flexibility to prevent JTL deliveries
- quality
- price
- Tracking / Tracing



New Transport companies for Corus



Name	modality	references



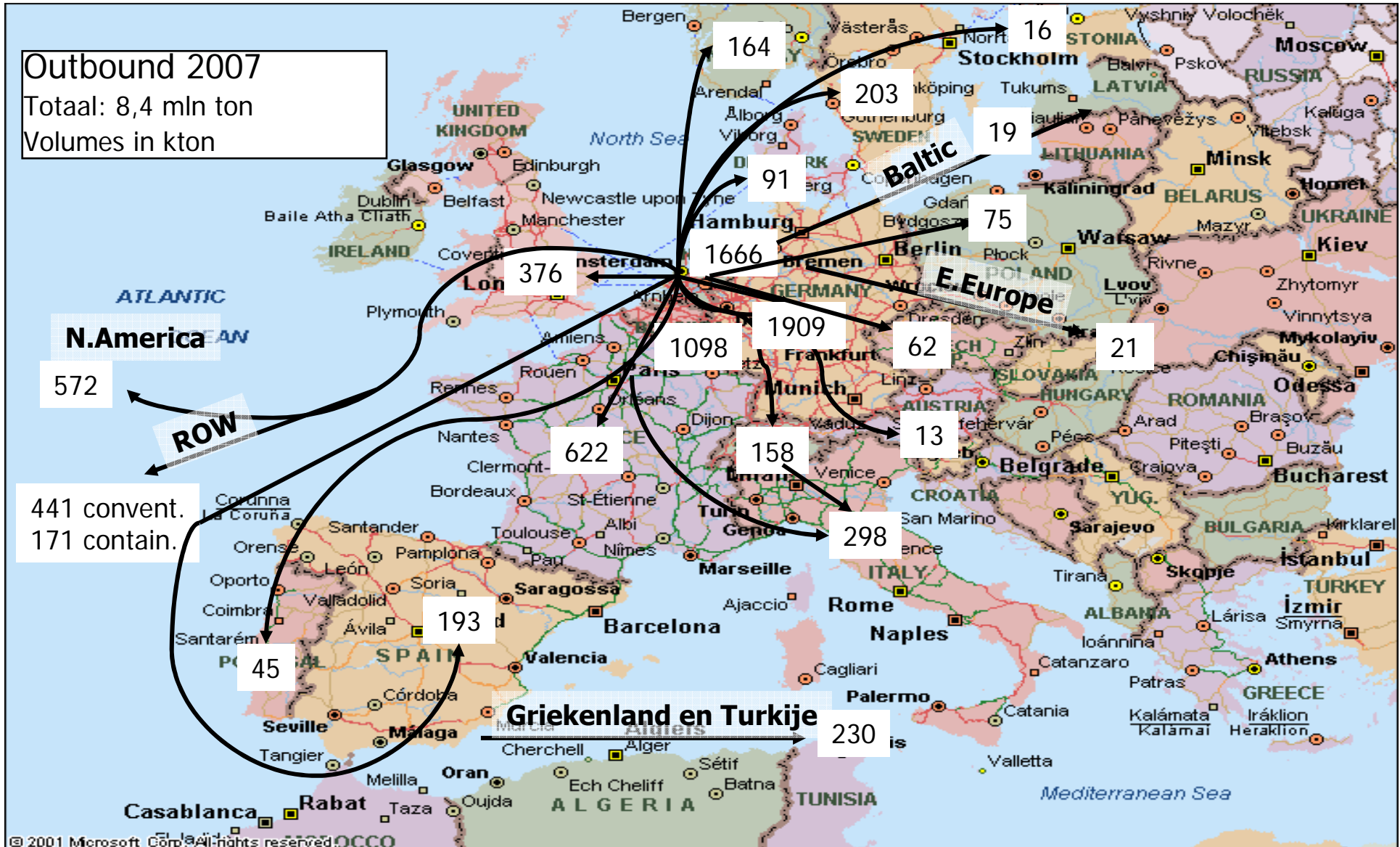
Any questions



×

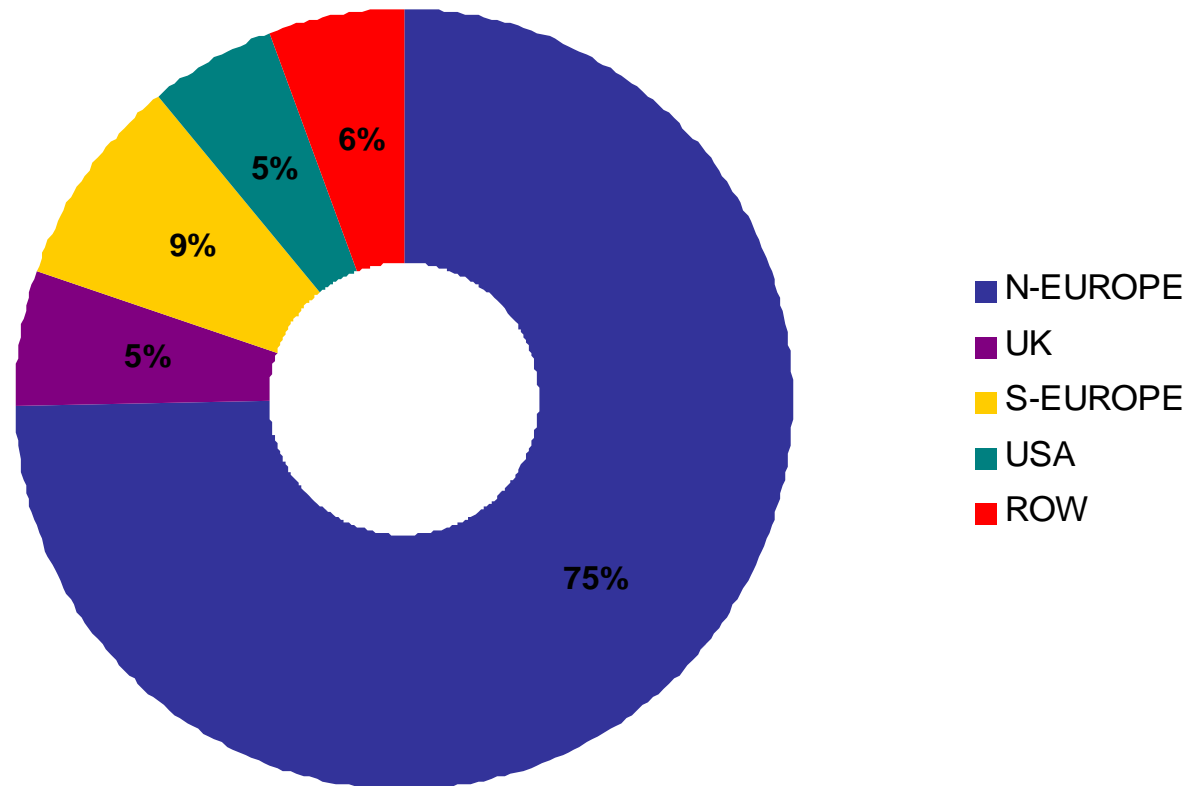


Volumes in 2007



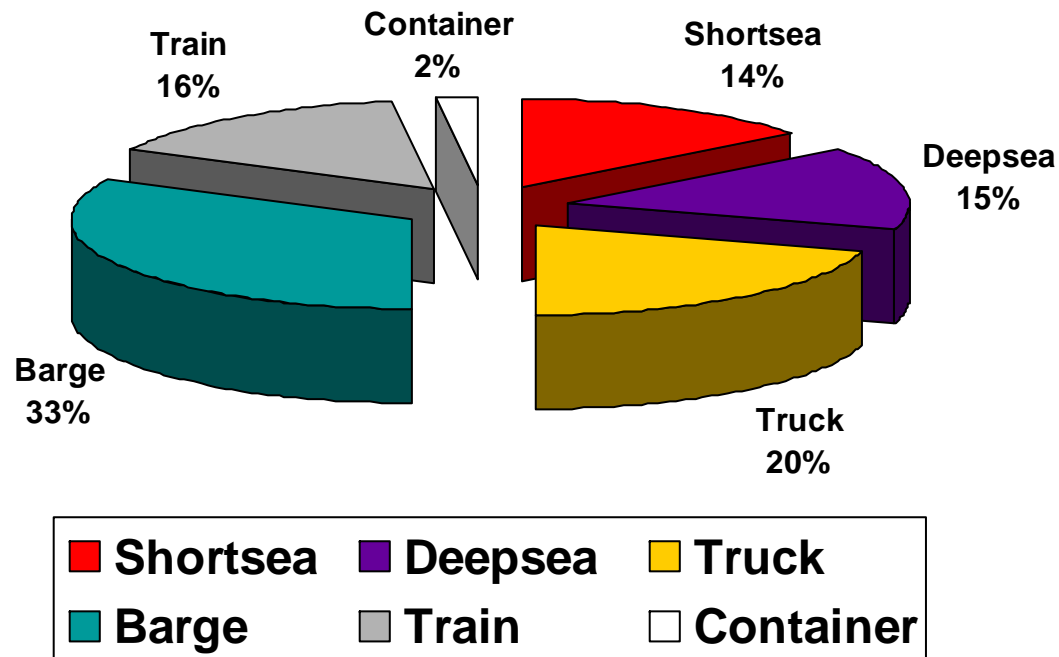
Destinations 2007

Corus Strip Products IJmuiden



Modalsplit in 2007

Modalsplit 2007



Volumes railtransport in 2007



- Steel
- Limestone

